

Abstract

This device provides a convenient means for a gynecologist to remotely position a patient's uterus, without the need for an assistant to hold a manipulator throughout the procedure. The end effector is cable-driven with a non-local control handle that may be positioned wherever convenient for the clinician. Uterine orientation is permitted about two degrees of freedom, vertical and lateral, the latter which is not available in any other device.

Background

- 600,000 hysterectomies per year – second most common procedure undergone by US women¹
- Many more exploratory procedures also require use of manipulator

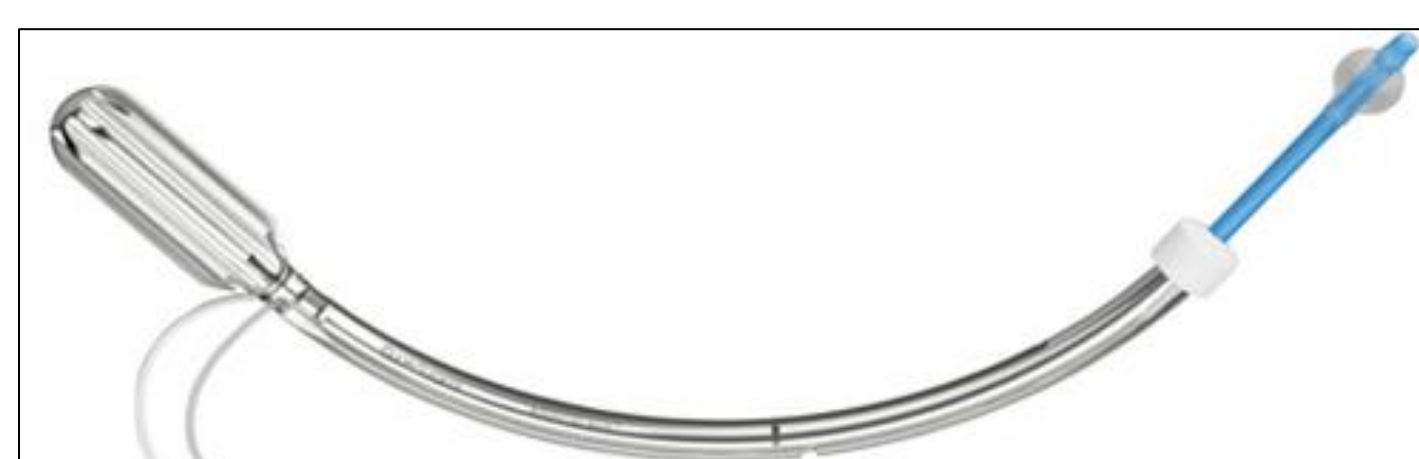
Problem

- No commercially available devices provide lateral motion – they must be manually forced sideways to achieve limited lateral displacement
- Manipulators usually require an assistant to hold the device throughout the procedure

Prior Art

V-Care² - ConMed Endosurgery

- Allocable for hysterectomies only
- Semi-rigid structure with anteversion & retroversion achieved through flexing
- No mechanical actuation



RUMI³ - Cooper Surgical

- Multifunctional manipulator
- Actuated via linkages
- 90° anteversion & 50° retroversion



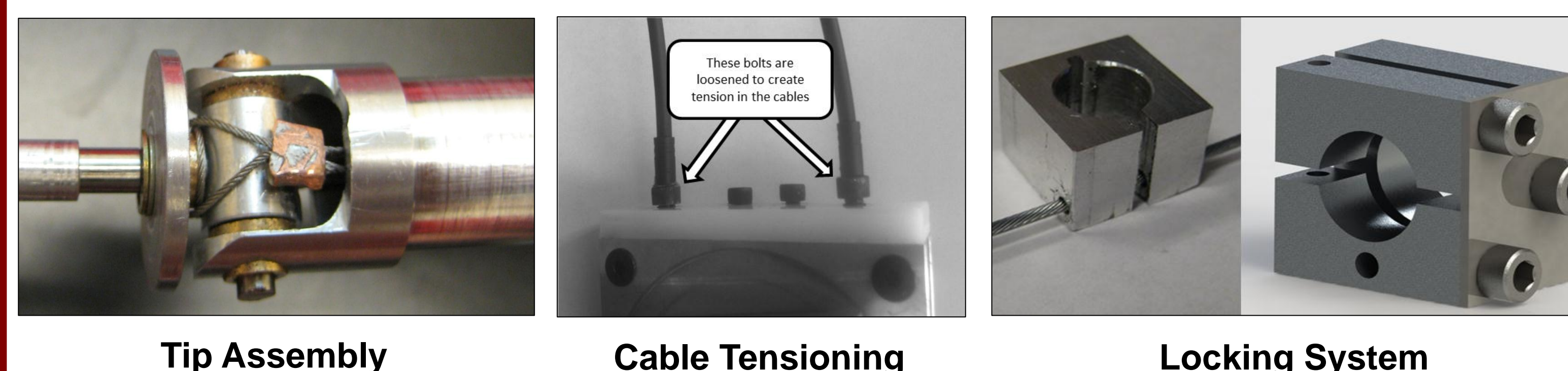
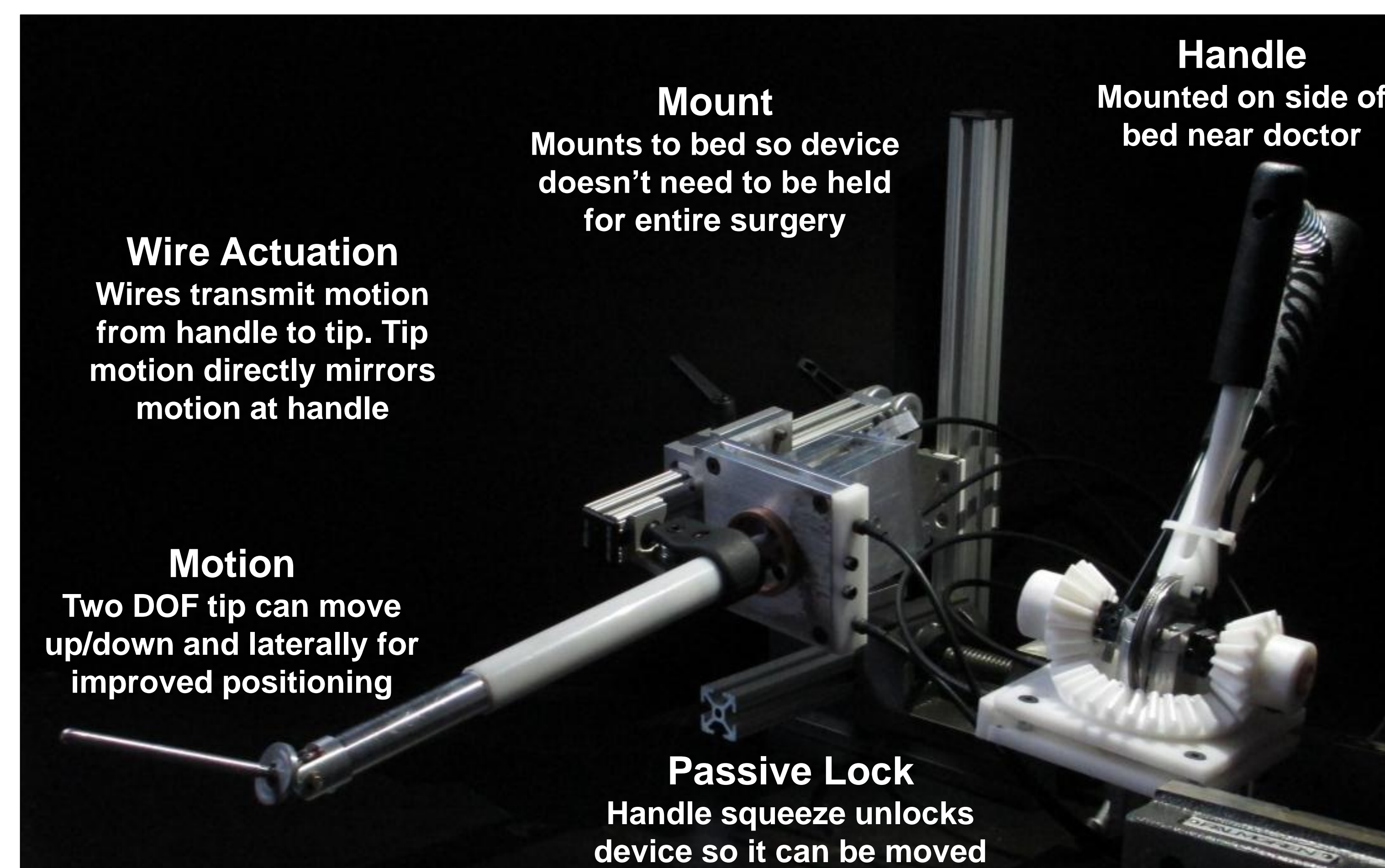
Acknowledgements

The presenters would like to thank Prof. Alex Slocum, Dr. Nevan Hanumara, and Dave Custer for their advice and instruction throughout the project. This work was supported by CIMIT under U.S. Army Medical Research Acquisition Activity Cooperative Agreement W81XWH-09-2-0001.

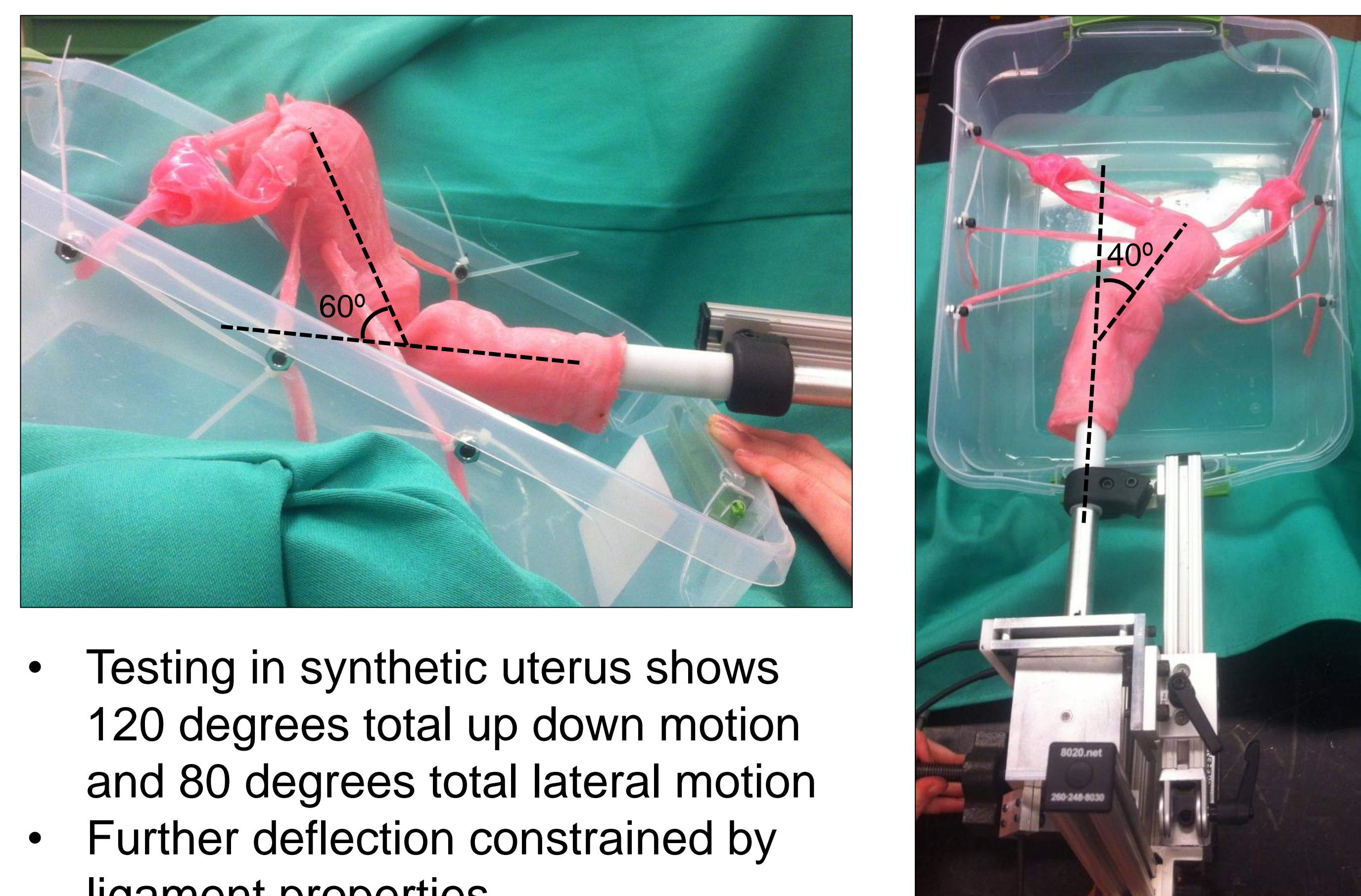
Functional Requirements

- Vertical *and* lateral motion
- Controlled by doctor at bedside
- Large enough for all patients
- Easy for doctor to use
- No assistant required
- Compatible with hysterectomy cups, dye tubes, and different size tips

Alpha Prototype

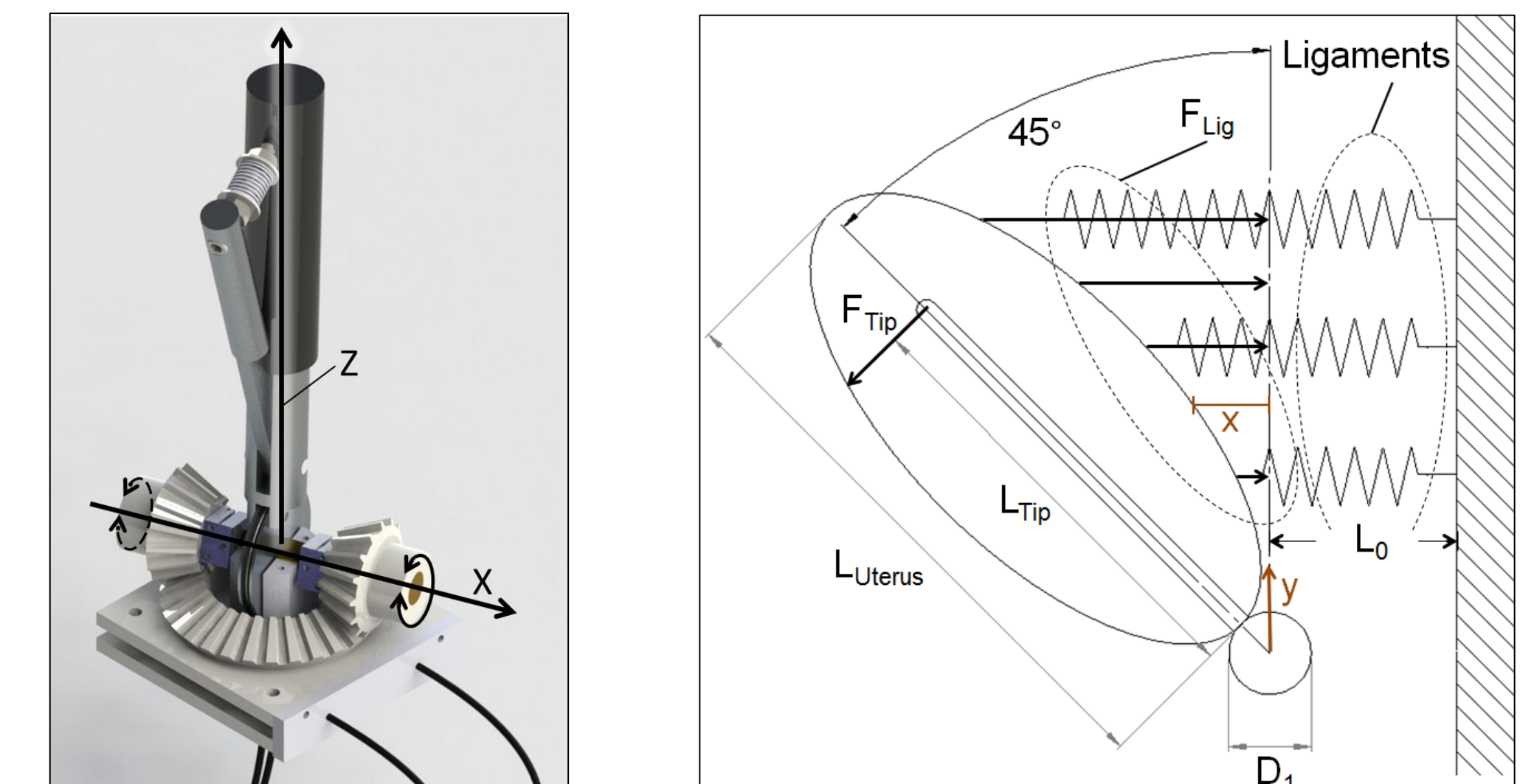


Synthetic Uterus Testing

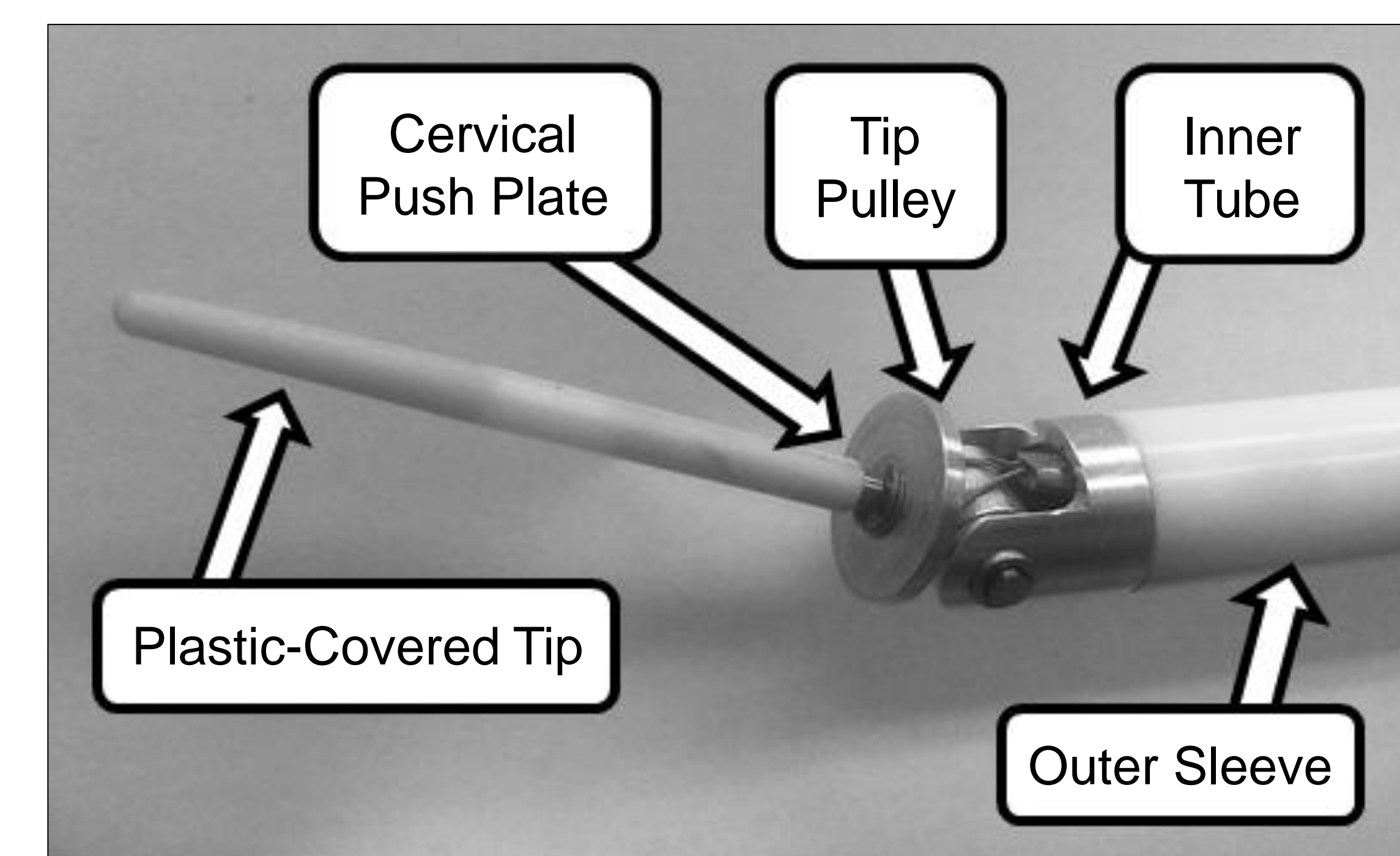


- Testing in synthetic uterus shows 120 degrees total up down motion and 80 degrees total lateral motion
- Further deflection constrained by ligament properties

Operation

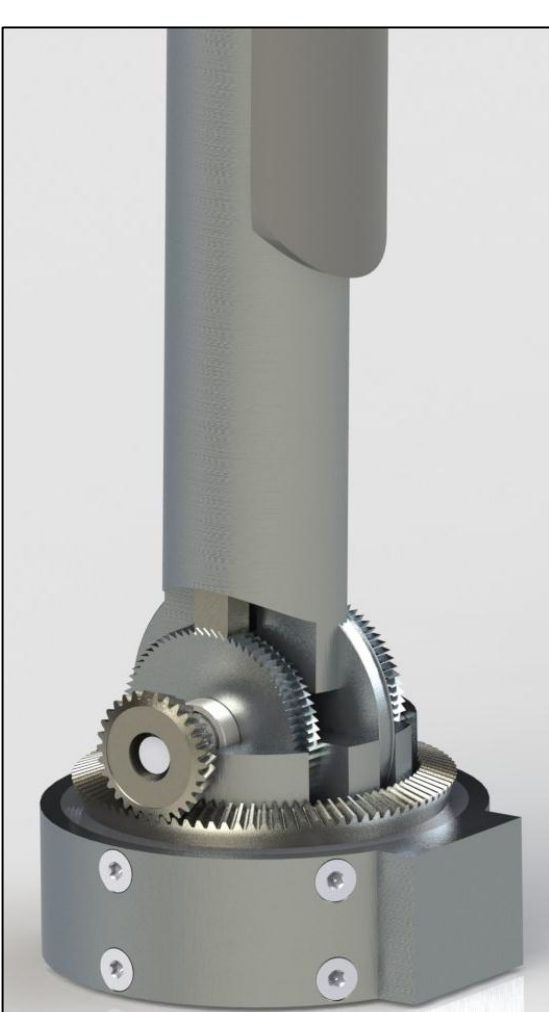


- Handle motion about Z-axis rotates tip
- Handle motion about X-axis causes up / down motion of the tip
- Lateral motion achieved through rotation first, then moving the tip to the side
- Designed to resist 50N of force at tip



Future Work

- In / out sliding motion controlled with foot pedal
- Locking mechanism refinement
- Improved manipulator mount
- Device ergonomics
- Improved design for assembly



References

- ¹ "Women's Reproductive Health: Hysterectomy." Centers for Disease Control and Prevention, 07 2009. Web. 16 Dec 2012. <http://www.cdc.gov/reproductivehealth/womensrh/Hysterectomy.htm>
- ² <http://www.conmed.com> – V-Care
- ³ <http://www.coopersurgical.com> – RUMI